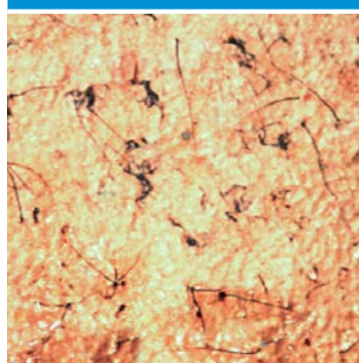
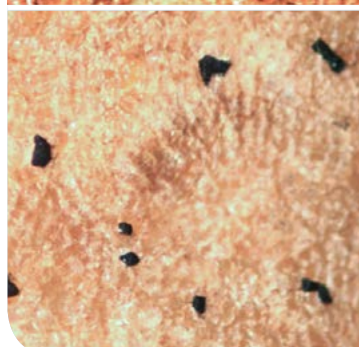


Silver scurf or Black dot?



Identifying **silver scurf** by its silvery sheen is not reliable. At 10x magnification, with a hand lens, seeing short black thread-like structures definitely is. However, they do wash off very easily.

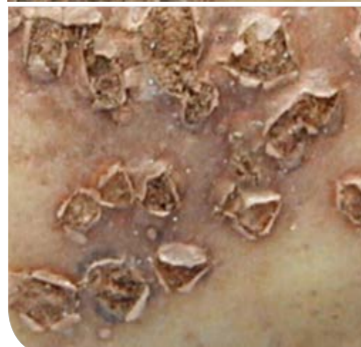


At the same magnification **black dot** appears as small, dispersed, black dots, sometimes as small as a skin cell. They are never dislodged by washing.

Common or Powdery scab?



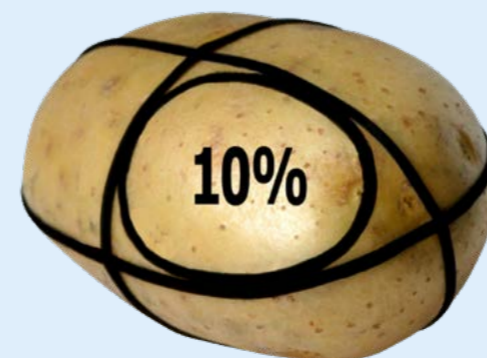
Common scab shapes vary widely and can both protrude from or crater the surface. They frequently coalesce into giant scabs. Angular edges and star-like cracking can sometimes be seen.



Powdery scab lesions are more uniform in shape and are generally small, round eruptions through the skin, which mostly remain discrete. A shallow depression can form in the flesh.

Surface area

To assess blemishing it is useful to visualise what 10 per cent of a tuber's surface area looks like. Take a marker pen and draw three opposing equators on a potato, dividing it into eight equal triangles. A large circle drawn inside a triangle is about 10 per cent.



Sampling

To choose an appropriate sample size it is useful to set a threshold incidence, above which a load would be rejected. In the table, the **minimum** number of tubers required to **detect** an unacceptable tuber (95 per cent of the time) is shown for a range of thresholds. Accurate estimation of the level of disease or defect requires sampling **three times** as many tubers at the chosen threshold. Samples must be representative of the whole crop.

Maximum permitted defect threshold %	Minimum sample to detect defect
20	15 tubers
10	30 tubers
5	60 tubers
2	150 tubers
1	300 tubers

Adapted from EC Directive 2002/63/EC using 95% confidence interval

Produced for you by:

AHDB Sutton Bridge
Crop Storage Research,
East Bank, Sutton Bridge,
Spalding, Lincs, PE12 9YD

T 0800 02 82 111
E sbcsr@ahdb.org.uk
W suttonbridge.com
@AHDB_Potatoes

If you no longer wish to receive this information, please email us on comms@ahdb.org.uk

© Agriculture and Horticulture Development Board 2018. All rights reserved.



POTATOES